

Most advanced topping technology



ROPA Fahrzeug- und Maschinenbau GmbH



ROPA Fahrzeug- und Maschinenbau GmbH



Werner Bauereisen (Sales Director)

Sittelsdorf 24

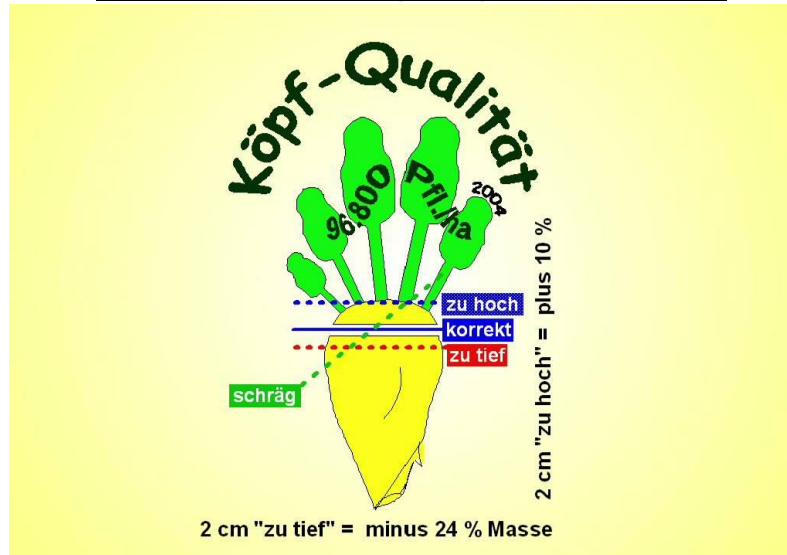
D-84097 Herrngiersdorf

Tel +49 (0) 8785 9601-0

www.ropa-maschinenbau.de



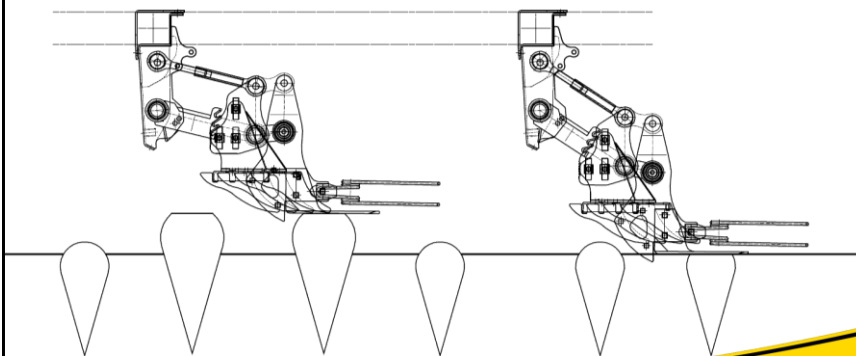
REVIEW: Topping target since 2004



ROPA

REVIEW: Standard solution since 2004

- Defoliator in front
- Parallel topping knife with an automatically regulated cutting angle provided precise scalping



ROPA

REVIEW: Topping of ROPA euro-Tiger since 2004



- Defoliator does not fully remove foliage from beet top
- Main advantages of ROPA strategy:
 - less wear
 - low fuel consumption

ROPA

Key target for further topping development: Additional benefits for all participants



There `s always some room for improvement!

ROPA

August 2009: Start of Micro-Topper field test



Main principle: Remaining foliage will be scalped by sharp knife

ROPA

August 2009: Start of Micro-Topper field test



Field tests showed good results

ROPA

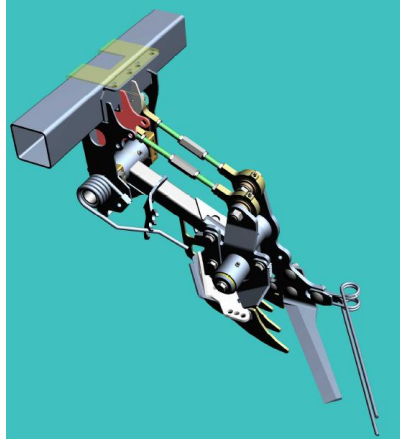
October 2009: Further improvements on Micro-Topper



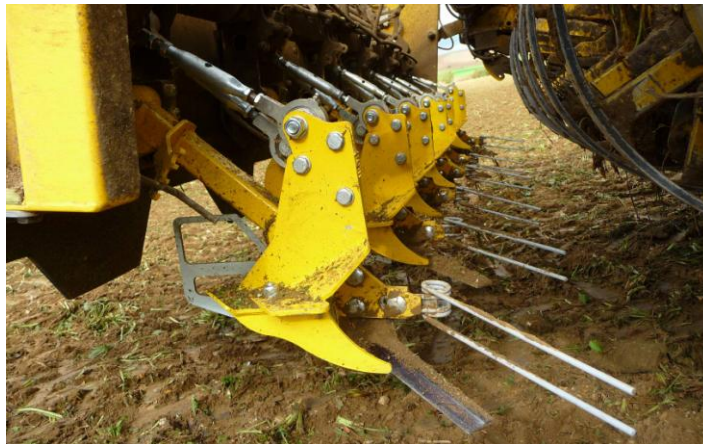
KEY TARGETS

- Full utilization of sugar beet yield
- Perfect working results in non-uniform crops
- Highest productivity under all conditions
- No increase of harvesting cost
- No limitation of harvesting speed
- No increase of maintenance cost
- Quick and easy retrofitting (only on PRh lifting units of ROPA)
- Suitable on 9-, 8- and 6-row lifting units



2009/2010: Launch of ROPA Micro-Topper 2**Functional principle:**

1. Precise scanning of beet body
2. Sharp knife is linked to crown height of beet body

ROPA**2009/2010: Launch of ROPA Micro-Topper 2****Correlation between crown height and cutting clearance:**

1. Very little cutting clearance on small sugar beets
2. Little increased cutting clearance on larger sugar beets

ROPA

ROPA Micro-Topper 2: Working result at 8km/h



Full yield utilization in non-uniform crops at high harvesting speed



ROPA Micro-Topper 2: Working result at 8km/h



ROPA Micro-Topper 2: Working result at 8km/h



ROPA

Key benefits of ROPA Micro-Topper 2:

1. Benefits for beet grower:

- Increased income because of higher beet delivery to factory
- Less beet damage
- System works also in non-uniform crops
- No cost increase



ROPA

Key benefits of ROPA Micro-Topper 2:

2. Benefits for machine owner:

- No reduction of harvesting speed
- No additional cost
- No additional fuel consumption
- Highest productivity
- System can be handled from every operator
- System works also in non-uniform crops
- Quick and easy retrofit on existing ROPA euro-Tiger



ROPA

Key benefits of ROPA Micro-Topper 2:

3. Benefits for sugar factory:

- Increased row material for sugar production
- No beet foliage in production process



ROPA

Key benefits of ROPA Micro-Topper 2:

4. Benefits for ROPA Fahrzeug- und Maschinenbau GmbH:

- Most content beet growers
- Most content machine owners
- Most content sugar factories



Let`s go harvesting!

ROPA